

How to chop guide

CUTTING YOUR HAIR:



When cutting your hair:

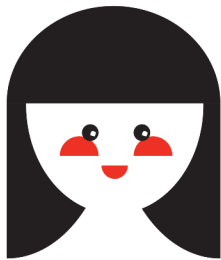
1. Your hair should be clean and dry
2. Tie hair in multiple pony tails. You can use the hair ties provided in this pack!
3. Plait each pony tail and secure each end with a hair tie.
4. Cut above the top hair ties.

SENDING YOUR HAIR:

1. Complete the online form: variety.org.au/hair-donation-form/
2. Put your hair into a Ziploc bag
3. Post your hair and the printed form to:
Variety - The Children's Charity
Locked Bag 2468
St Leonards NSW 1590



HOW YOUR HAIR WILL BE USED:



If your hair is **>35cm** and **not chemically straightened or coloured**, it can be used to create a specialised suction wig for people who have lost their hair due to a medical condition. Long, natural wigs like these are especially popular with children and will be cared for and cherished for years to come.

If your hair is **<35cm** and/or **coloured**, it can still be part of a beautiful wig! Wigmakers can work with shorter and coloured ponytails to craft stylish wigs that adults in particular love.



Thank you for your
incredible contribution.
Your chop changes lives!

